

抗疫仪器仪表及系统产品



信息汇编（一）

Anti-epidemic Instrument and System Products
Information Compilation (I)

中国仪器仪表学会
二零二零年五月

China Instrument and Control Society
may, 2020

前 序

2020年，岁在庚子。突如其来的新冠肺炎疫情成为2020年开年关键词。随着疫情的发展扩散，“中国怎么办、世界怎么办”成为全球共同关心的重大问题。为了抗击疫情，全球无数的仪器及分析检测人，一直奋斗在自己的工作岗位。

中国仪器仪表学会团体会员单位在此次疫情中，作出了积极的贡献。他们也许不直接生产物资，他们不直接检测指标，但他们可以使物资生产得更快更好，他们可以让指标检测得更准确快速。

为此，中国仪器仪表学会特推出《抗疫仪器仪表及系统产品信息汇编（中英文版）（一）》，将这些在疫情中发挥重要作用的仪器仪表及系统信息，进行整理汇编。与相关国际组织进行信息交流，互通有无。

Preface

In 2020, the 37th year of the Sexagenary Cycle, the sudden outbreak of COVID-19 hit the headline at the start of the year. As the epidemic evolves and spreads, "what China will do and what the world will do" have become a major global concern. In order to fight the epidemic, countless instrument and analysis and detection personnel around the world have been working relentlessly at their own work post.

The group members of the China Instrument and Control Society have made positive contributions during the outbreak. They may not produce the materials directly, and they may not test the indicators directly, but they can facilitate the production of materials in a faster and better way, and they can make detecting the indicators more accurately and quickly.

For this reason, the China Instrument and Control Society has launched the Information Compilation on Anti-epidemic Instruments and System Products (Chinese and English Version) (I), which sorts and compiles the information of instruments and systems that have played an important role in fighting the epidemic. We are committed to exchanging information with relevant international organizations and supplying what others need, so as to spur the members of the Society to go abroad and make greater contributions in controlling of the epidemic around the world.



中国仪器仪表学会
China Instrument and Control Society



产品目录

- 01 ● 精密干涉滤光片
Precision Interference Filter
- 02 ● 红外测温信号处理芯片
Product Infrared temperature-measuring signal processing chip
- 03 ● 久好电子的集成电路芯片
Integrated circuit chip of jiu hao Micro-electronics Model JHM3000, JHM1203, JHM1401
- 04 ● 智能门磁装置
Intelligent Door Sensor
- 05 ● 温控器 AI-720JM
Temperature controller AI-720JM
- 06 ● Rpmag60 智能型电磁流量计 GDT3000 系列可燃气体报警器
Rpmag60 intelligent electromagnetic flow-meter GDT3000, series combustible gas alarm and
- 07 ● 新冠肺炎治疗仪器（呼吸机；麻醉机）设备上配套使用的压力表
Pressure gauges for Coronavirus Disease 2019 (COVID-19) treatment instrument and equipment (ventilator; anaesthesia machine)
- 08 ● 医用离心机
Medical centrifuge
- 09 ● 六项呼吸道病毒核酸检测试剂盒（恒温扩增芯片法）
Six-item respiratory virus nucleic acid assay kit (constant temperature amplification chip method)
- 10 ● AE2100 核酸提取仪
AE2100 nucleic acid extraction system
- 11 ● T120H 高德体温筛查版红外热像仪
GUIDE T120H Fever Screening Thermal Camera
- 12 ● C400M 高德体温筛查版红外热像仪
GUIDE C400M Fever Screening Thermal Camera
- 13 ● IR236 高德全自动红外热成像测温告警系统
GUIDE236 IR Fever Warning System
- 14 ● 天隆科技新冠核酸检测整体方案
New novel coronavirus 2019 (2019-nCoV) nucleic acid test overall solution of Tianlong Science and Technology
- 15 ● 水质在线监测系统
Water Quality Online Monitoring System
- 16 ● 谱育科技 EXPEC1810 红外成像体温快速筛查系统
EXPEC 1810 Infrared Imaging Rapid Temperature Screening System
- 17 ● 人脸识别测温终端系统
Face Recognition Temperature Measurement Terminal System

产品名称：精密干涉滤光片

Product : Precision Interference Filter

沈阳仪表科学研究院有限公司

此次疫情中投入使用情况

- (1) 使用地区、场景：湖北、广州、上海、浙江等省市
- (2) 数量：6万片
- (3) 效果：精度高、准确度高。

Shenyang Academy of Instrumentation Science Co., Ltd.

Application in epidemic situation

- (1) Use area、scene: Hubei, Guangzhou, Shanghai, Zhejiang and other provinces and cities
- (2) Quantity: 60,000 pieces
- (3) Effect: high precision and accuracy

使用案例

沈阳仪表科学研究院汇博光学专业生产精密干涉滤光片，具有五十多年的光学薄膜技术研发制造经验，技术水平国际先进国内领先。我公司研发有应用于生化分析仪、凝血分析仪的生化滤光片，以及应用于实时荧光定量PCR仪、荧光显微镜、免疫荧光POCT设备的荧光滤光片。生化滤光片具有深截止、矩形化波形、超高信噪比等特点，最大吸光度测试可达4ABS以上。荧光滤光片能够与检测试剂盒选用的常用标记荧光素（FAM、FITC、HEX、ROX、CY5、CY5.5）相匹配，通过抑制噪声信号、提高信噪比降低多重荧光各通道间相互影响。在截止背景大于OD6的同时可以做到透过率 > 90%。

USE CASES

Huibo Optics of Shenyang Academy of Instrumentation Science specializes in the production of precision interference filters, with more than 50 years of experience in the research and development of optical thin film technology and advanced technology in the world and leading technology in China. Our company has developed biochemical filters for biochemical analyzer and coagulation analyzer, as well as fluorescent filters for real-time fluorescence quantitative PCR instrument, fluorescence microscope and immune-fluorescence POCT equipment. Biochemical filter is featured with deep cutoff, rectangle waveform, ultra-high signal-to-noise ratio and so on. The maximum absorbance test can reach more than 4 ABS. The fluorescent filter can match with the commonly used mark florescent (FAM, FITC, HEX, ROX, CY5, CY5.5) selected in the detection kit, and reduce the mutual influence among multiple fluorescent channels by suppressing the noise signal and improving the signal-to-noise ratio. When the cutoff background is greater than OD6, the transmittance can be greater than 90%.

产品（或系统）主要性能

典型波段：340、405、470、492、515、530、560、580、620、630、660、690、730nm 波长精度：+/-3nm（最优可达 +/-1nm） 波长范围：300nm--1200nm 通带宽度：8nm--40nm 通带透射率：>90% 带外截至：> OD6 Typical

MAIN PERFORMANCE OF PRODUCTS (OR SYSTEMS)

Typical Waveband: 340, 405, 470, 492, 515, 530, 560, 580, 620, 630, 660, 690, 730nm; Wavelength Accuracy: +/-3nm (the optimal can reach +/-1nm); Wavelength Range: 300nm--1,200nm; Pass-band Width: 8nm--40nm; Pass-band Transmittance: >90%; Cutoff Depth of Out-band: > OD6 Typical

网址：www.hb-optical.com

联系人：高琳琳 info@hb-optical.com

Website: www.hb-optical.com

Contact: Gao Linlin, info@hb-optical.com

产品名称：红外测温信号处理芯片

Product : Product Infrared temperature-measuring signal processing chip

杭州晶华微电子有限公司

此次疫情中投入使用情况

- (1) 使用地区、场景：用于人体测温额温枪、耳温枪生产，国内大型额温枪生产厂商及国外知名医疗设备生产厂商生产使用。
- (2) 数量：2020年已销售超过2千万片，红外测温芯片中国国内出货量第一。
- (3) 效果：晶华微是国内红外测温芯片主要供应商，红外测温芯片，性能稳定性价比高，处于红外测温领域行业领导地位。

Hangzhou SDIC Microelectronics Co., Ltd.

Application in epidemic situation

- (1) Use area, scene: It is used for the production of body temperature measuring thermometers and ear thermometers. It is used by large domestic manufacturers of thermometers and well-known foreign medical equipment manufacturers.
- (2) Quantity: We sold more than 20 million pieces in 2020 and is the first domestic infrared temperature measurement IC in China.
- (3) Effects: SDIC is a major supplier of infrared temperature measurement IC in China. The products have stable performance and are cost-effective, which is leading the industry in infrared temperature measurement.

使用案例

此次疫情之前，晶华微一直十分关注人体健康这一领域，从体重、体脂再到体温，各人体健康参数的准确测量得益于晶华微高精度ADC的信号处理以及软件滤波算法。长期以来，积累了上百种成熟稳定的整体解决方案，芯片大批量生产及应用，与国内几十家规模化生产额温枪厂商稳定合作，获得客户与市场广泛认可。

此次疫情以来，晶华微红外测温信号处理芯片保持稳定生产供货，并根据客户需求调整软件滤波算法适配不同厂商传感器。额温枪的测量误差可达 $\pm 0.2^{\circ}\text{C}$ ，测量速度小于2S，非接触式测温，避免了交叉感染，精准高效的测温也为此次防疫之战争取了宝贵时间。

USE CASES

Before the epidemic, SDIC are very concerned of the field of human health. From body weight, body fat to body temperature, the accurate measurement of various human health parameters benefits from the signal processing and software filtering algorithms of SDIC high precision ADC. For a long time, it has accumulated hundreds of mature and stable overall solutions and has mass production and application of IC. We have stable cooperation with many large domestic thermostat manufacturers and has been widely recognized by customers and the market. Since the epidemic, SDIC infrared temperature measurement signal processing IC has maintained stable production and supply. We keep adjusting the software filtering algorithms to adapt to sensors from different manufacturers according to the customer needs. The measurement error can reach $\pm 0.2^{\circ}\text{C}$, and the measurement speed is less than 2s. The product is non-contact so it can avoid cross infection. The accurate and efficient has also taken precious time in this epidemic period.

产品（或系统）主要性能

晶华微红外测温信号处理芯片是一颗集低噪声高输入阻抗前置放大器和高精度ADC于一体的8位RISC超低功耗MCU，其外设资源丰富：包括LCD/LED驱动电路、电池电压检测电路、RTC模块、PWM/PDM、PFD、CAPTURE输出模块以及多种通信接口，如：UART，I2C，SPI等。得益于芯片的高集成度，只需要配合简单的外围元器件以及温度传感器，即可完成温度采集、模/数转换、数据处理、数据传输以及LCD/LED显示等功能，性能稳定，性价比远超海外同类厂商产品。

MAIN PERFORMANCE OF PRODUCTS (OR SYSTEMS)

SDIC infrared temperature measurement signal processing IC is an 8-bit RISC ultra-low-power MCU which is integrated of low noise and high input impedance preamplifier and high precision ADC. It has abundant peripheral resources: LCD / LED drive circuit, battery voltage detection circuit, RTC module, PWM / PDM, PFD, CAPTURE output module and various communication ports, eg.: UART, I2C, SPI, etc. With the high integration of the IC, it only needs to cooperate with the simple peripheral components and temperature sensors to fulfil the functions such as temperature acquisition, analog / digital conversion, data processing, data transmission, and LCD / LED display. The performance is stable and the products are more cost-effective if comparing with the similar overseas products.

联系人：李文

销售：0571-86673068

手机：15325714186

销售部邮箱：sales-1@sdicmicro.com

市场部邮箱：marketing-1@sdicmicro.com

网址：www.SDICmicro.com

Contact: Li Wen

Sales: 0571-86673068

Mobile phone: 15325714186

Sales e-mail: sales-1@sdicmicro.com

Marketing e-mail: marketing-1@sdicmicro.com

Website: www.SDICmicro.com

产品名称：久好电子的集成电路芯片

Product : Integrated circuit chip of Jiuha Micro-electronics
Model JHM3000, JHM1203, JHM1401

北京久好电子科技有限公司

此次疫情中投入使用情况

- (1) 使用地区、场景：JHM3000为人体测温芯片，用于制造集中检测系统可穿戴电子体温计、24小时连续体温监测仪等产品。JHM1203和JHM1401传感器信号调理芯片在各种非接触式测温枪、测温仪应用极其广泛。
- (2) 数量：出货的芯片数量已经达到将近400万颗。
- (3) 效果：客户认为久好电子的芯片高精度、高稳定性和可靠性、低功耗低成本非常出色地满足了他们的需求，有力支持了他们的市场。



Beijing Jiuha Micro-electronics Co., Ltd.

Application in epidemic situation

- (1) Use area, scene: JHM3000 is a human body temperature measurement chip, which is used to manufacture centralized detection system, wearable electronic thermometer, 24-hour continuous temperature monitor and other products. JHM1203 and JHM1401 sensor signal conditioning chips are widely used in various non-contact temperature guns and thermometers.
- (2) Quantity: the number of chips delivered has reached nearly 4 million
- (3) Effect: customers think that the chip of Jiuha Micro-electronics has high precision, high stability and reliability, low power consumption and low cost, which has met their needs and strongly supported their market



使用案例

某生物科技有限公司：应用JHM3000制作小儿智能体温计，实现24H持续精准的监测，操作简洁流畅，提供及时准确的高温警报。

两家不同的科技公司：深圳的应用JHM1203，杭州的应用JHM1401，成功制造红外耳温枪，已经投放市场。



USE CASES

A biological technology Co., Ltd.: using JHM3000 to make children's intelligent thermometer, and achieve 24h continuous and accurate monitoring; simple and smooth operation, providing timely and accurate high temperature alarm.

Two different technology companies: the one in Shenzhen uses JHM1203, the one in Hangzhou uses JHM1401; infrared ear temperature guns were successfully manufactured and put on the market.



产品（或系统）主要性能

久好电子的主要产品是传感器信号调理芯片，有JHM1X0X、JHM2X0X、JHM3000及JHM5100等多个系列。

(1) JHM3000是人体温度测量的高精度温度传感器电路芯片，用于接触式人体测温传感器，如接触式测温计、蓝牙体温贴等。

(2) 抗疫防控中各种非接触式测温枪、测温仪应用极其广泛，久好电子的JHM1203和JHM1401传感器信号调理芯片是这些设备的核心部件，针对差分电阻桥式或半桥式传感器信号设计，完成对热电堆传感器输出信号的AD转换和放大，电压信号经它们处理后可以被高精度地转换为数字信号输出，最终实现非接触式人体温度测定。

联系人：柴红

电话：010-82600852, 010-82601263

电邮：chaih@jiuhaomicro.com sales@jiuhaomicro.com

MAIN PERFORMANCE OF PRODUCTS (OR SYSTEMS)

The main products of Jiuha Micro-electronics are sensor signal conditioning chips, which have multiple series such as JHM1X0X, JHM2X0X, JHM3000 and JHM5100.

(1) JHM3000 is a high-precision temperature sensor circuit chip for human body temperature measurement, which is used for contact human body temperature sensor, such as contact thermometer, Bluetooth thermometer, etc

(2) A variety of non-contact temperature measuring guns and thermometers are widely used in epidemic prevention and control. JHM1203 and JHM1401 sensor signal conditioning chips of Jiuha Micro-electronics are the core components of these devices. The design is made for differential resistance bridge or half bridge sensor signals to complete AD conversion and amplification of the output signals of thermopile sensors. After being processed by them, the voltage signals can be converted into high-precision digital signal output, thus realizing non-contact human body temperature measurement finally.

Website: www.jiuaomicro.com

Contact: Chai Hong

Tel: 010-82600852, 010-82601263

E-mail: chaih@jiuhaomicro.com sales@jiuhaomicro.com

产品名称：智能门磁装置

Product: Intelligent Door Sensor

汉威科技集团股份有限公司

此次疫情中投入使用情况

- (1) 使用地区、场景：目前，该系统已在郑州市以及荥阳等地运用，主要用于社区管理如防疫监管、独居老人服务、临界商铺消防预警等场景。
- (2) 数量：1万台左右
- (3) 效果：利用本系统实现远程管理、多级防控，在实现群防群控的同时又能有效避免交叉感染



Hanwei Electronics Group Corporation

Application in epidemic situation

- (1) Use area, scene: At present, the system has been used in Zhengzhou and Xingyang, mainly for community management such as epidemic prevention and supervision, services for elderly people living alone, street store fire warning and other scenarios;
- (2) Quantity: around 10,000 sets
- (3) Effect: the system is used to realize remote management and multilevel prevention and control; effectively avoid cross infection while realizing group prevention and control



使用案例

该系统通过智能门磁实现隔离住户的门禁管理，以物联网网络为基础，对辖区居家隔离对象实施全覆盖。智能门磁装置的安装简便，只需在隔离住户门上安装智能门磁，负责人通过微信公众号录入信息，专班人员在手机或电脑端安装调试后台管理系统便可完成。如出现隔离人员不遵守居家隔离要求，擅自开门外出情况，门磁内磁体与钢簧管分离的距离一旦超过1.5厘米，报警指示灯便会亮起，同时向后台管理系统发送报警信号，专班人员可迅速作出反应，有效保证隔离人员“不漏管、不脱管”。



USE CASES

The system realizes access control management of isolated resident through intelligent door sensor. Based on the Internet of Things, the system fully covers the isolated resident at home in the jurisdiction area. The intelligent door sensor is easy to install: put it on the door of isolated resident; the person-in-charge inputs information through WeChat official account; the shift staff install and debug the backstage management system on the mobile phone or computer terminal. If the isolated personnel do not comply with the isolation requirements at home and open the door to go out without permission, and once the separation distance between the magnet in the door sensor and the steel reed exceeds 1.5cm, the alarm indicator light will be on, and the alarm signal will be sent to the backstage management system, and the shift staff can react quickly to effectively ensure that the isolated personnel "do not evade the management".

产品（或系统）主要性能

居家隔离人员的出入情况实时监控：使用基于NB-IOT传输网络的“电子封条”，24小时实时监测门开启和关闭的状态，一旦监测到“被隔离监控人员”开门，疫情隔离防控检测中心平台会自动弹窗报警。三级权限管理，实现多级报警：分级管理，管理人员、基层巡检人员、督察员，按级别划分管理权限，做到管理有序，提升工作效率。多处站点同时接收报警信息：同一个社区可设置多账号同时接收报警信息，以确保无一遗漏。隔离人员开门记录查询功能：对于居家隔离人员开门次数及开门情况有记录可查，做到防控有据。社区网格人员管理高效：平台设有巡跟记录登记表格，让社区工作人员上门监测做到有迹可循，方便快捷的保存每一次巡查记录，提高工作效率。

网址：www.hanwei.cn

联系人：张江涛

客户服务热线：13663810716

MAIN PERFORMANCE OF PRODUCTS (OR SYSTEMS)

Real time monitoring of entry and exit of home-based quarantine personnel: use the "electronic seal" based on NB-IOT transmission network to monitor the opening and closing status of the door in real time in 24 hours. Once the "monitored quarantined personnel" is detected to open the door, the platform of epidemic isolation, prevention and control and detection center will automatically pop up the window for alarm. Three-level authority management to achieve multilevel alarm: hierarchical management, management personnel, grass-roots patrol personnel, inspectors; management authority allocated based on rank, to achieve orderly management and improve work efficiency. Multiple sites receive alarm information at the same time: multiple accounts can be set in the same community to receive alarm information at the same time to ensure that there is no omission. Isolated personnel door-opening record query function: there are records to check the door-opening times and conditions of isolated personnel at home, so as to ensure the basis for prevention and control. Efficient management of community grid personnel: the platform is equipped with patrol record registration form, so that the community staff can track the door-to-door monitoring; each patrol record is conveniently and quickly saved to improve work efficiency.

Website: www.fpi-inc.com

Contact: Zhang Jiangtao

Customer Service Hotline:13663810716

产品名称：温控器AI-720JM

Product : Temperature controller AI-720JM

厦门宇电自动化科技有限公司

此次疫情中投入使用情况

- (1) 使用地区、场景：疫情地区所有用到红外测温枪的场所，广泛应用于黑体炉内校准红外测温枪温度
- (2) 数量：每台黑体炉用到一台温控器，已出厂5000台
- (3) 效果：控温效果非常好，35~42°C范围内误差 $\leq 0.04^\circ\text{C}$ ，温度稳定性 $\pm 0.05^\circ\text{C}/30$ 分钟



Xiamen Yudian Automation Technology Co., Ltd.

Application in epidemic situation

- (1) Use area, scene: It is widely used to calibrate the temperature of infrared thermometer in blackbody furnace in all places where the infrared thermometer is used in epidemic area
- (2) Quantity: one temperature controller is used for one blackbody furnace, and 5,000 controllers have been delivered.
- (3) Effects: excellent temperature control, the error within the range of 35~42°C $\leq 0.04^\circ\text{C}$, temperature stability $\pm 0.05^\circ\text{C}/30$ minutes



使用案例

此次疫情中大量使用的红外测温枪在出厂前需要通过黑体炉校准温度。为此，宇电设计了一款黑体炉专用的高精度温控器AI-720JM。该温控器用于黑体炉中，通过设定一定温度（比如36.5°C），控制内部的固态继电器升温达到该温度。用户将红外测温枪对准黑体炉测温。如果红外测温枪显示温度是36.5°C，则精度良好，允许出厂；如果显示温度高于或低于36.5°C，则需要通过手动调整红外测温枪的温度，以达到校准目的。宇电温控器AI-720JM的出现为市场上大部分黑体炉厂家提供了高精度高性价比的选择，通过精密控温以达到红外测温枪高精度的校准，为疫情期间测温服务提供高精度保障。

产品（或系统）主要性能

型号：AI-720JM，面板尺寸48*48mm，Pt100输入，固态继电器输出，测量精度0.1级，35~42°C范围内误差 $\leq 0.04^\circ\text{C}$ ，温度稳定性 $\pm 0.05^\circ\text{C}/30$ 分钟。

网址：www.yudian.com

联系人：黄小姐 18030056937

邮箱：eva@xmyudian.cn

QQ：3279426785

USE CASES

The infrared thermometers used extensively in this epidemic need to be calibrated by a blackbody furnace before they leave the factory. For this, Yudian designed a kind of high-precision temperature controller AI-720JM dedicated to blackbody furnace. This temperature controller is used in the blackbody furnace to control the internal solid-state relay to reach the temperature by setting a certain temperature (for example, 36.5°C). The user points the infrared thermometer at the blackbody furnace to measure the temperature. If the display temperature of the infrared thermometer is 36.5°C, the accuracy is good and delivery is approved; if the display temperature is higher or lower than 36.5°C, it is necessary to manually adjust the temperature of the infrared thermometer to achieve the purpose of calibration. Yudian AI-720JM temperature controller provides the high-precision and cost-effective choice for most of the blackbody furnace manufacturers in the market, as well as high-precision guarantee for temperature measurement service during epidemic through the high-precision calibration of infrared thermometers by precise temperature control.

MAIN PERFORMANCE OF PRODUCTS (OR SYSTEMS)

Model: AI-720JM, panel size 48*48mm, Pt100 input, solid state relay output, measuring accuracy 0.1 level, the error within the range of 35~42°C $\leq 0.04^\circ\text{C}$, and the temperature stability of $\pm 0.05^\circ\text{C}/30$ minutes.

Website: www.yudian.com

Contact: Miss Huang 18030056937

QQ: 3279426785

E-mail: eva@xmyudian.cn

产品名称：RPmag60智能型电磁流量计 GDT3000系列可燃气体报警器

Product : RPmag60 intelligent electromagnetic flow-meter GDT3000 series combustible gas alarm and

北京瑞普三元仪表有限公司

此次疫情中投入使用情况

(1) 使用地区、场景：广西南宁一所医院新冠防疫项目中的危化品气体的存储中可燃气体报警器产品的使用。广西柳州市两家医院，两个新冠防疫项目污水处理中的电磁流量计使用。广西梧州市人民医院、百色传染病医院、桂林南溪山医院传染病医疗废水处理项目中电磁流量计产品的使用。

(2) 数量：58台

(3) 效果：客户对瑞普三元的供货速度和服务保障高度赞许。



Beijing BR Sanyuan Instrument Co., Ltd.

Application in epidemic situation

(1) Use area, scene: used in combustible gas alarm product in the storage of dangerous chemical gas in the COVID-19 epidemic prevention project in a hospital in Nanning, Guangxi; used in electromagnetic flow-meter product in sewage treatment of two COVID-19 epidemic prevention projects in two hospitals in Liuzhou, Guangxi; used in electromagnetic flow-meter product in the infectious disease medical waste water treatment project in the People's Hospital of Wuzhou (Guangxi), Baise Infectious Disease Hospital and Nanxishan Hospital (Guilin).

(2) Quantity: 58 sets

(3) Effect: customers highly praise the speed of supply and service assurance of BR Sanyuan



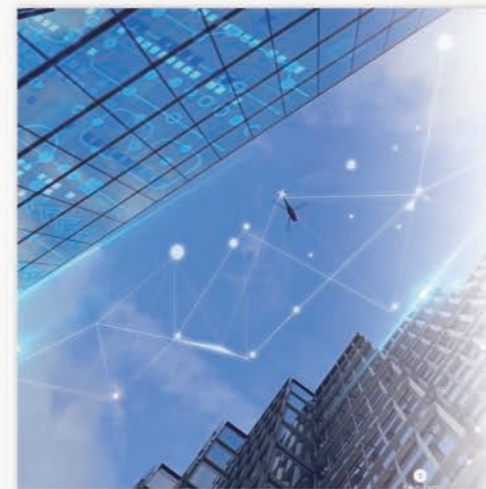
使用案例

GDT3000系列可燃气体报警器和RPMAG60智能型电磁流量计是公司的两类拳头产品。疫情期间，广西多家医院继续这两类产品，公司领导带领生产部同志召开紧急会议，详细计算每一个环节所需的时间，向项目人员强调任务的重要性，最后所有订单如期交付。前线客户对瑞普三元的供货速度和服务保障高度赞许。随后，瑞普三元公司陆续又接到了广西梧州市人民医院、百色传染病医院、桂林南溪山医院传染病医疗废水处理项目中的电磁流量计产品订单。



USE CASES

GDT3000 series combustible gas alarm and RPmag60 intelligent electromagnetic flow-meter are two star products of the company. During the epidemic, as many hospitals in Guangxi continued to use these two products, leaders of the company hold an emergency meeting with the colleagues of the production department to calculate the time required for each link in detail, stressed the importance of tasks to project personnel, and finally delivered all orders on time. Front line customers highly praised the supply speed and service assurance of the company. Later, the company has received orders for flow-meter product in the infectious disease medical waste water treatment project in the People's Hospital of Wuzhou (Guangxi), Baise Infectious Disease Hospital and Nanxishan Hospital (Guilin).



产品（或系统）主要性能

GDT3000系列可燃气体报警器的主要用途是检测泄露到空气中的各类危险性可燃气体，当泄露浓度达到报警设定值时，仪器发出声光报警。同时，仪器输出信号至消防联动控制系统，快速自动启动排风设备或切断气源，避免发生爆炸事故，以保护人民生命财产。RPmag60智能电磁流量计则多用于流程工业中过程流量参数监测或市政行业的水贸易计量。该产品安装在充满导电液体的管道上，全天候测量流经管道的液体流量。随着近几年智慧水务、环保、节能减排等方面对计量提出新的要求，智能型电磁流量计因测量精度高、压损低、使用寿命长、具有无线传输功能等优点，已广泛应用于市政供水、排水和污水处理等场所，为贸易交接双方提供计量结算依据。

MAIN PERFORMANCE OF PRODUCTS (OR SYSTEMS)

The main purpose of GDT3000 series combustible gas alarm is to detect all kinds of dangerous combustible gas leaked into the air, and when the leaked concentration reaches the set value by the alarm, the instrument will send out an audible and visual alarm. At the same time, the instrument outputs signals to the fire linkage control system, which can quickly and automatically start the exhaust equipment or cut off the air source, so as to avoid explosion accidents and protect people's lives and properties.

RPmag60 intelligent electromagnetic flow-meter is mostly used for process flow parameter monitoring in process industry or water trade measurement in municipal industry. The product is installed on the pipeline full of conductive liquid, and measures the liquid flow through the pipeline all day long. As smart water, environmental protection, energy saving and emission reduction have put forward new requirements for measurement in recent years, intelligent electromagnetic flow-meter has been widely used, thanks to its advantages in high measurement accuracy, low pressure loss, long service life and wireless transmission, in municipal water supply, drainage and sewage treatment and other places, providing the basis for measurement and settlement for trade transfer parties.

网址：www.brsanyuan.com

联系人：车女士 18611707098

Website: www.brsanyuan.com

Contact: Ms.Che 18611707098

产品名称：新冠肺炎治疗仪器（呼吸机；麻醉机） 设备上配套使用的压力表

Product : Pressure gauges for Coronavirus Disease 2019 (COVID-19) treatment instrument and equipment (ventilator; anaesthesia machine)

北京布莱迪仪器仪表有限公司

此次疫情中投入使用情况

(1) 使用地区、场景：北京布莱迪：北京谊安医疗系统股份有限公司、北京思瑞德医疗器械有限公司、深圳普博科技有限公司、深圳市瑞沃德生命科技有限公司、深圳科曼医疗设备有限公司、北京航天长峰医疗有限公司、广东鸽子医疗器械有限公司、深圳市百格医疗技术有限公司、深圳市诺然美泰科技有限公司、深圳市瑞欧医疗技术有限公司。

(2) 数量

医用膜盒微压表YES-50Z -20~100cmH₂O 年用量约：4000只

医用压力表Y-40AZ11 0~10bar/250bar 年用量约：10000只

(3) 效果：替代进口产品，用户反映良好！



Beijing Brighty Instrument Co., Ltd.

Application in epidemic situation

(1) Use area, scene

Beijing Brighty: Beijing Aeonmed Medical System Co., Ltd., Beijing Siriusmed Medical Device Co., Ltd., Shenzhen Probomedical Science and Technology Co., Ltd., Shenzhen RWD Life Technology Co., Ltd., Shenzhen Comen Medical Equipment Co., Ltd., Beijing Aerospace Changfeng Medical Co., Ltd., Guangdong Pigeon Medical Apparatus Co., Ltd., Shenzhen Baige Medical Technology Co., Ltd., Shenzhen Northern Technology Co., Ltd., Shenzhen Ruio Medical Technology Co., Ltd..

(2) Quantity

Medical diaphragm capsule low pressure gauge YES-50Z -20~100cmH₂O Annual consumption about 4,000 gauges

Medical pressure gauge Y-40AZ11 0~10bar/250bar Annual consumption about 10,000 gauges

(3) Effects: it replaces the imported product, and is well received by users!



使用案例

与北京谊安医疗系统股份有限公司合作15年以上，该公司呼吸机和麻醉机上使用我司生产的产品

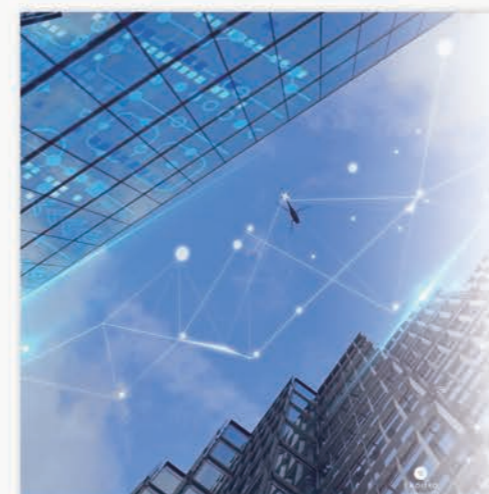
该公司成立于2001年，是国内领先的麻醉和呼吸医疗设备研发制造龙头企业，产品覆盖两大业务板块：一是麻醉和手术室解决方案，产品包含麻醉机、手术灯、手术床、吊塔、麻醉监护、输液泵、升温毯、无痛胃肠镜以及数字化手术室解决方案等；二是机械通气和呼吸病管理，产品包含呼吸机、呼吸监护、制氧机、高流量氧疗、睡眠呼吸机以及数字化ICU解决方案等。



USE CASES

Over 15 years of cooperation with Beijing Aeonmed Medical System Co., Ltd., the gauges on its ventilators and anesthesia machines are products produced by our company.

Founded in 2001, the company is the domestic leading enterprise for research and development and manufacturing of anesthesia and respiratory medical equipment, and the products cover two business segments: one is anesthesia and operating room solution. The products include anesthesia machine, operating lamp, operating bed, hanging tower, anesthesia monitoring, infusion pump, warming blankets, painless gastrointestinal endoscope and digital operating room solution; the other is mechanical ventilation and respiratory disease management. Products include ventilator, respiratory monitoring, oxygen generator, high-flow oxygen therapy, sleep ventilator and digital ICU solution.



产品（或系统）主要性能

医用膜盒微压表YES-50Z技术参数：

表盘直径：50mm 精度等级：2.5

表壳材质：塑料 膜盒材质：铜合金

螺纹尺寸：45度斜插式，φ8mm插嘴配O型密封圈

医用压力表Y-40AZ11 0~10bar/250bar技术参数：

表盘直径：40mm 精度等级：2.5级

表壳材质：304SS 接液材质：铜合金

轴向背部螺纹安装 螺纹尺寸：ZG1/8"

网址：www.brighty.com.cn

联系人：徐志勇 邮箱：13822170383@163.com

MAIN PERFORMANCE OF PRODUCTS (OR SYSTEMS)

Medical diaphragm capsule low pressure gauge YES-50Z technical parameters:

Dial parameter: 50mm Accuracy class: 2.5 class

Case materials: plastic Diaphragm capsule materials: copper alloy

Thread size: 45°oblique insertion, φ8mm interlocking with type O sealing ring

Medical pressure gauge Y-40AZ11 0~10bar/250bar Technical parameters:

Dial parameter: 40mm Accuracy class: 2.5 class

Case materials: 304SS Wetted materials: copper alloy

Axial back screw mounting Thread size: ZG1/8"

Website: www.brighty.com.cn

Contact: Xu Zhiyong E-mail:13822170383@163.com

产品名称：医用离心机

Product : Medical centrifuge

湖南赫西仪器装备有限公司

此次疫情中投入使用情况

(1) 使用地区、场景：益阳市卫生应急中心、广东医科大学海洋医药研究院、广东医科大学海洋医药研究院、咸宁市疾病预防控制中心检验科等

(2) 数量：TD4台式低速离心机 15台、LR6M低速大容量冷冻离心机 1台、3H16RI智能高速冷冻离心机 1台、ZLS-1型真空离心浓缩仪 1台、TDZ5台式低速离心机 1台、

效果：医用离心机适用于生物化学、医学、药学、临床试验、食品及环保等实验科研单位，是对悬浮物液体进行分离制备工作的常规设备，在新型冠状病毒肺炎方面可以用于病毒的检测分离，助力抗击新型冠状病毒传播。



Hunan Herexi Instrument & Equipment Co. Ltd

Application in epidemic situation

(1) Use area, scene: Yiyang Health Emergency Center, Institute of Marine Drugs of Guangdong Medical University, laboratory department of Xianning Center for Disease Control and Prevention

(2) Quantity: there are fifteen TD4 low-speed desk centrifuges, one LR6M low-speed high-capacity refrigerated centrifuge, one 3H16RI intelligent high-speed refrigerated centrifuge, 1 ZLS-1 vacuum centrifuge concentrator and one TDZ5 low-speed desk table centrifuge.

(3) Effects: medical centrifuge is applicable to biochemistry, medicine, pharmacy, clinical trials, food and environmental protection and other experimental scientific research units, as a kind of conventional equipment for the separation and preparation of suspended liquid. It can be used for the detection and separation of viruses in Coronavirus Disease 2019 (COVID-19), helping to fight against the spread of novel coronavirus.



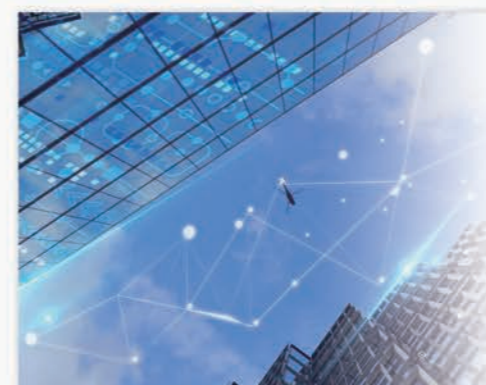
使用案例

赫西仪器面对新型冠状病毒感染的肺炎疫情严峻态势，通过医疗卫生机构及湖南省红十字会进行物资捐赠，向益阳市卫生应急中心捐赠一批用于病毒检测分离的医用离心机设备（15台TD4医用离心机）。



USE CASES

In the face of the severe situation of COVID-19, Herexi Instrument made material donation through medical organizations and the Red Cross Society of Hunan including a batch of medical centrifuge equipment (fifteen TD4 medical centrifuges) for virus detection and isolation to Yiyang Health Emergency Center.



产品（或系统）主要性能

TD4台式低速离心机安全性高、质量优异，性价比高，是对悬浮物液体进行分离制备工作的常规设备，是各类实验室、各级医院、高校等必备的实验室离心分离基础仪器。

3H16RI智能高速冷冻离心机系列可选配多种角转子和水平转子，高达100组自定义程序，具有卓越的多用途特性，是赫西仪器离心机经典产品。应用于细菌、蛋白沉淀，核酸提取，细胞/亚细胞组份分离，环保样本处理。

MAIN PERFORMANCE OF PRODUCTS (OR SYSTEMS)

TD4 low-speed desk centrifuges have great safety, excellent quality and high cost performance. As a kind of conventional equipment for the separation and preparation of suspended liquid, it is an essential basic equipment for centrifugal separation in laboratory for all kinds of laboratories, hospitals at all levels and universities.

The 3H16RI intelligent high-speed refrigerated centrifuge series can be equipped with a variety of angle rotors and horizontal rotors, up to 100 sets of custom programs, with excellent multi-purpose characteristics, as the classic centrifuge product of Herexi Instrument. It can be applied to bacteria, protein precipitation, nucleic acid extraction, cell/subcellular component separation, and environmental sample processing.

联系人：寻继勇

联系电话：0731 - 88142288

网址：www.hexiyiqi.com

邮箱：hexi@hexiyiqi.com

Contact: Xun Jiyong

Contact number: 0731 - 88142288

Website: www.hollycon.com

E-mail: hexi@hexiyiqi.com

产品名称：六项呼吸道病毒核酸检测试剂盒（恒温扩增芯片法）

RTisochip -A 恒温扩增核酸分析仪

RTisochip -W高通量恒温扩增核酸分析仪

Product : Six-item respiratory virus nucleic acid assay kit (constant temperature amplification chip method)

RTisochip™ -A constant temperature amplification nucleic acid analyzer

RTisochip™ -W high-throughput constant temperature amplification nucleic acid analyzer

北京博奥晶典生物技术有限公司

此次疫情中投入使用情况

- (1) 使用地区、场景：医院检验科、感染科、呼吸科、ICU 以及第三方医学检验所等
- (2) 数量：近2万人份
- (3) 效果：有效鉴别流感患者和新冠肺炎患者



Beijing CapitalBio Technology Co., Ltd.

Application in epidemic situation

- (1) Use area、scene: the laboratory department, infection department, respiratory department and ICU of hospitals, and third-party medical laboratory.
- (2) Quantity: nearly for 20,000 persons
- (3) Effects: effective identification of influenza patients and Coronavirus Disease 2019 (COVID-19) patients



使用案例

六项呼吸道病毒核酸检测芯片试剂盒目前已在中国各个省市广泛使用，向武汉捐赠的1.2万人份的芯片试剂盒已于华中科技大学附属协和医院、同济医院、火神山医院和湖北省人民医院的临床诊治。



USE CASES

The six-item respiratory virus nucleic acid assay chip kit has been widely used in various provinces and cities in China, and the 12,000 donated chip kits to Wuhan have been applied for clinical diagnosis and treatment in the Union Hospital and Tongji Hospital Affiliated to Huazhong University of Science and Technology, Huoshenshan Hospital and Hubei General Hospital.



产品（或系统）主要性能

本试剂盒采用恒温扩增技术，可同时对多种核酸靶基因进行高通量并行检测。该试剂盒采用多指标联检的方式，90分钟内检测包括2019新型冠状病毒（2019-nCoV）在内的6种呼吸道常见病毒，实现快速确诊感染病例，准确排除疑似病例的目标。

目前，六项呼吸道病毒核酸检测试剂盒（恒温扩增芯片法）和恒温扩增微流控核酸分析仪，以及另一款覆盖呼吸道细菌感染快速检测的呼吸道病原菌核酸检测试剂盒（恒温扩增芯片法），均已获得CE-IVD认证，形成了细菌、病毒全覆盖的呼吸道病原体核酸快速检测系统，不仅可用于发热门诊患者的快速鉴别诊断，同时还将成为重症和危重症患者救治的有力武器。

MAIN PERFORMANCE OF PRODUCTS (OR SYSTEMS)

The constant temperature amplification technology is adopted for this kit, which can simultaneously detect a variety of nucleic acid target genes in high-throughput parallel. At present, the six-item respiratory virus nucleic acid assay kit (constant temperature amplification chip method) and constant temperature amplification microfluidic nucleic acid analyzer as well as the respiratory pathogen nucleic acid assay kit for the rapid test of common respiratory tract bacterial infections (constant temperature amplification chip method), have been certified by CE-IVD, which has formed a respiratory pathogen nucleic acid detection system completely covering the bacteria and viruses. It not only can be used for rapid differential diagnosis of fever outpatients, but also become a powerful weapon for the treatment of severe and critical patients.

NO	RESPIRATORY VIRUS	NO	RESPIRATORY VIRUS
1	新型冠状病毒 (2019-NCOV) NOVEL CORONAVIRUS (2019-NCOV)	4	甲型 H3N2 流感病毒 INFLUENZA A (H3N2) VIRUS
2	甲型流感病毒 INFLUENZA A VIRUS	5	乙型流感病毒 INFLUENZA B VIRUS
3	新型甲型 H1N1 流感病毒(2009) NEW INFLUENZA A (H1N1) VIRUS(2009)	6	呼吸道合胞病毒 RESPIRATORY SYNCYTIAL VIRUS

NO	RESPIRATORY VIRUS	NO	RESPIRATORY VIRUS
1	NOVEL CORONAVIRUS 2019 (2019-NCOV)	4	INFLUENZA A (H3N2) VIRUS
2	INFLUENZA A VIRUS	5	INFLUENZA B VIRUS
3	NEW INFLUENZA A (H1N1) VIRUS(2009)	6	RESPIRATORY SYNCYTIAL VIRUS

产品名称：AE2100核酸提取仪

Product : AE2100 nucleic acid extraction system

北京和利康源医疗科技有限公司

此次疫情中投入使用情况

- (1) 使用地区、场景：浙江疫区的医院、研究所和检测机构
- (2) 数量：40台
- (3) 效果：用于新型冠状病毒肺炎病毒确诊，主要解决病毒基因的提取和纯化



Beijing HollyCon Medical Science and Technology Co., Ltd.

Application in epidemic situation

- (1) Use area, scene: hospitals, research institutes and testing institutions in epidemic areas in Zhejiang
- (2) Quantity: 40 machines
- (3) Effects: used for the diagnosis of novel coronavirus 2019 (2019-nCoV), mainly for the extraction and purification of virus genes.



使用案例

AE2100全自动核酸提取仪运抵黑龙江省大庆市大庆油田总医院，同时公司派出工程师现场进行安装、调试和培训，当天将设备调试到最优状态并投入使用。使用AE2100全自动核酸提取仪只需要人工加入样本一次，最快30分钟可完成32个样本的核酸提取，最大程度地避免操作人员与样本过多接触，有效缓解一线医务人员的工作压力，切实保护一线医务人员的安全，降低感染风险。



USE CASES

The AE2100 automatic nucleic acid extraction system was delivered to Daqing Oilfield General Hospital, Daqing, Heilongjiang. Meanwhile, the company sent engineers to the site for installation, debugging and training. On the same day, the equipment was adjusted to the optimal state and put into use. The AE2100 automatic nucleic acid extraction system only needs to add samples manually once, and the nucleic acid extraction of 32 samples can be completed in the fastest 30 minutes, which can minimize the excessive contact between operators and samples, effectively relieve the working pressure of front-line medical personnel, actually protect the safety of front-line medical personnel and reduce the risk of infection.



产品（或系统）主要性能

- 主要用于病毒核酸裂解、纯化等
- 通量：1-32
- 提取速度：30-50分钟
- 适用体积：50-1000微升
- 磁珠回收率：95%
- 安全保障：紫外消毒
- 温控范围：常温至80摄氏度

MAIN PERFORMANCE OF PRODUCTS (OR SYSTEMS)

- It is mainly used for virus nucleic acid lysis and purification
- Flux: 1-32
- Extraction rate: 30-50 minutes
- Applicable volume: 50-1,000 μ L
- Recovery rate of magnetic beads: 95%
- Safety assurance: ultraviolet disinfection
- Temperature control range: from normal temperature to 80 °C

网址：www.hollycon.com

联系人：李佳

手机：15910960282

Website: www.hollycon.com

Contact: Li Jia

Mobile phone: 15910960282

产品名称： T120H高德体温筛查版红外热像仪

Product : GUIDE T120H Fever Screening Thermal Camera

武汉高德红外股份有限公司

此次疫情中投入使用情况

- (1) 使用地区、场景：适用医院/工厂/学校/商场/写字楼等公共场所的快速体温筛查工作
- (2) 数量 T120H目前有大量需求，供不应求，已经有十万加的订单在手，正在
- (3) 效果：T120H 体温筛查版红外热像仪是一款快速体温检测工具。可在安全距离以外对目标人群测温，精度达 $\pm 0.5^{\circ}\text{C}$ ，能满足体温初筛需求，经济实用。它既适用于灵活巡检，也可在固定出入口部署使用，是提升疫情防控效率、确保大众健康安全理想选择。



Wuhan Guide Infrared Co., Ltd.

Application in epidemic situation

- (1) Use area, scene: Suitable for rapid temperature screening in hospitals, factories, schools, shopping malls, office buildings and other public places to control and reduce the spread of virus with fever symptom.
- (2) Quantity: At present, there is a big demand exceeds supply. There are already 100,000 plus orders, and we work hard to produce.
- (3) Effects: GUIDE T120H Fever Screening Thermal Camera is a fast temperature detection tool, which can be used to detect human temperature from a safety distance with accuracy of $\pm 0.5^{\circ}\text{C}$. It is an economical and practical thermal camera that could meet the needs of primary temperature screening well. GUIDE T120H is not only suitable for flexible temperature screening, but also can be deployed at the entrances and exits of the public area, which makes it an ideal device to improve the efficiency of epidemic prevention and protect public health.



使用案例

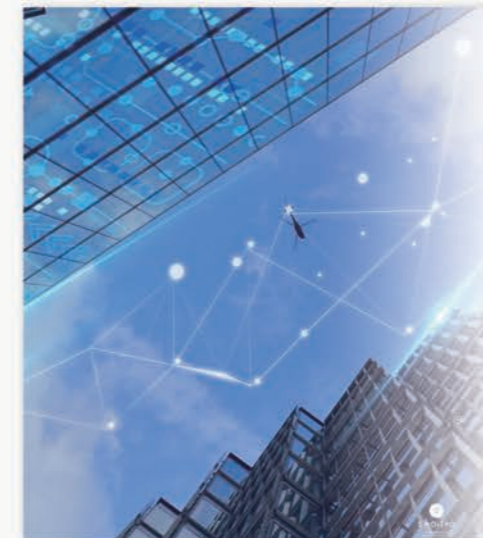
它可在人流密集的公共场所进行大面积监测，通过系统非接触式对人员体温进行初筛，快速找出并追踪体温超温人员，帮助排查人体发热症状。高德红外全自动热成像测温告警系统结合了红外人体测温算法和AI智能人脸识别等先进技术，测温精准且操作简单方便。该系统功能强大，多目标跟踪可确保不遗漏目标，自定义报警温区和高温屏蔽设置可避免其它高温物体的干扰，发现超温人员自动报警并拍照存储，方便用户查询与分类管理，是政府机关、机场、车站、大型工厂、学校、商业中心等公共场所卫生防疫的理想设备。



USE CASES

GUIDE IR236 IR Fever Warning System can be applied to mass fever screening in crowded public places, which help to detect people with a potential fever and may contain or limit the spread of the Coronavirus through identification of infected individuals showing fever symptoms. GUIDE IR236 combines advanced technology such as thermography human temperature measurement algorithm and AI intelligent face recognition to make the equipment accurate and easy to use.

The IR236 equipped with various powerful functions. Multi-target tracking can ensure that no targets are missed. Custom warning zones and high-temperature shielding settings can avoid interference from other high-temperature objects. When detect the febrile people, it supports automatic warning, tracking and photo taking for storage. Support video recording. Convenient to query and classify management. GUIDE IR236 is the ideal equipment for epidemic prevention in public places such as airports, stations, factories, schools, commercial centers and more.



产品（或系统）主要性能

- 超便捷，随时随地巡查体温
- 很安全，1米外测温，减少感染风险，且不打扰被测者
- 很智能，自动提示发热目标
- 支持保存大量图片，温度信息数据可追溯

网址：www.wuhan-guide.com

联系人：Sally Gao

电话：18707194018

邮箱：enquiry@guide-infrared.com

MAIN PERFORMANCE OF PRODUCTS (OR SYSTEMS)

- Compact and portable, suitable for mobile detection and also can be fixed by optional tripod
- Safe, detect temp from 1 meter away, reducing the risk of infection and without disturbing the subject
- Intelligent, image alarm while detect a fever
- Support to save up to 100,000 images, can check temperature data

Website: www.wuhan-guide.com

E-mail : enquiry@guide-infrared.com

Customer Hotline : +86-18707194018 Sally Gao

产品名称：C400M高德体温筛查版红外热像仪

Product : GUIDE C400M Fever Screening Thermal Camera

武汉高德红外股份有限公司

此次疫情中投入使用情况

- (1) 使用地区、场景：适用于车站/工厂/写字楼/商超/学校等人流有序进出的场景，建议设置人员单向通道。
- (2) 数量 1000套，持续生产中1,000 units have been sold, production continues
- (3) 效果：高德C400红外热成像体温筛查仪可在人流密集的公共场所进行大面积监测，通过系统非接触式对人员体温进行初筛，快速找出体温超温人员，并自动报警。帮助排查人体发热症状。精度达 $\pm 0.4^{\circ}\text{C}$ ，可测距离约为3-5米。测温效率约为150人/分钟



Wuhan Guide Infrared Co., Ltd.

Application in epidemic situation

- (1) Use area、scene: Applicable to gathering public places such as stations, factories, offices, supermarkets, schools where people flow in and out in orderly manner, and suggest set up a one-way channel.
- (2) Quantity: 1,000 units have been sold, production continues
- (3) Effects: GUIDE C400M Fever Screening Thermal Camera can help to detect virus related fevers quickly, smartly, and safely which are widely used at airport, stations, factories, schools and other gathering public places. It support automatic warning while identify the fevers with the accuracy of $\pm 0.4^{\circ}\text{C}$, Measurable distance is about 3-5 meters, temperature measurement efficiency is about 150 people per minute



使用案例

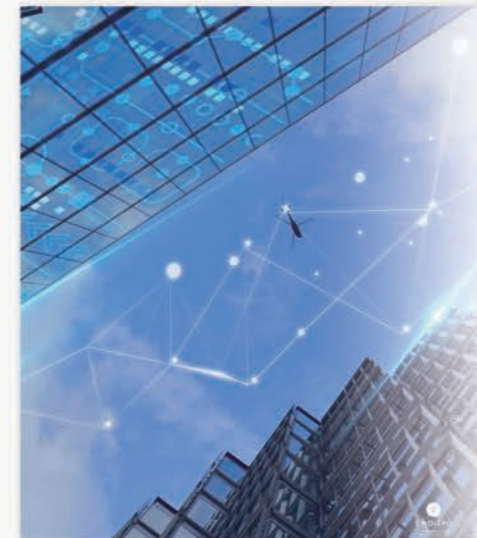
它可在人流密集的公共场所进行大面积监测，通过系统非接触式对人员体温进行初筛，快速找出并追踪体温超温人员，帮助排查人体发热症状。高德红外全自动热成像测温告警系统结合了红外人体测温算法和AI智能人脸识别等先进技术，测温精准且操作简单方便。该系统功能强大，多目标跟踪可确保不遗漏目标，自定义报警温区和高温屏蔽设置可避免其它高温物体的干扰，发现超温人员自动报警并拍照存储，方便用户查询与分类管理，是政府机关、机场、车站、大型工厂、学校、商业中心等公共场所卫生防疫的理想设备。



USE CASES

GUIDE IR236 IR Fever Warning System can be applied to mass fever screening in crowded public places, which help to detect people with a potential fever and may contain or limit the spread of the Coronavirus through identification of infected individuals showing fever symptoms. GUIDE IR236 combines advanced technology such as thermography human temperature measurement algorithm and AI intelligent face recognition to make the equipment accurate and easy to use.

The IR236 equipped with various powerful functions. Multi-target tracking can ensure that no targets are missed. Custom warning zones and high-temperature shielding settings can avoid interference from other high-temperature objects. When detect the febrile people, it supports automatic warning, tracking and photo taking for storage. Support video recording. Convenient to query and classify management. GUIDE IR236 is the ideal equipment for epidemic prevention in public places such as airports, stations, factories, schools, commercial centers and more.



产品（或系统）主要性能

- 全自动，发热即报警
- 超灵活，可固定或手持
- 可旋转，全方位测温
- 效率高，150人/分钟

网址：www.wuhan-guide.com

联系人：Sally Gao

电话：18707194018

邮箱：enquiry@guide-infrared.com

MAIN PERFORMANCE OF PRODUCTS (OR SYSTEMS)

- Fully automatic, alarm while detect fevers
- Super flexible, can be fixed or handheld
- Rotatable, all-round temperature measurement
- High efficiency, 150 people per minute

Website: www.wuhan-guide.com

E-mail : enquiry@guide-infrared.com

Customer Hotline : +86-18707194018 Sally Gao

产品名称：IR236高德全自动红外热成像测温告警系统

Product : GUIDE236 IR Fever Warning System

武汉高德红外股份有限公司

此次疫情中投入使用情况

- (1) 使用地区、场景：适用于机场/火车站/大型工厂/商超/学校等人流量较大的公共场所
- (2) 数量：已销售10000套，持续供应中
- (3) 效果：高德IR236全自动红外热成像测温告警系统可在人流密集的公共场所进行大面积监测，通过系统非接触式对人员体温进行初筛，快速找出并追踪体温超温人员，自动报警抓拍存储，帮助排查人体发热症状。精度 $< \pm 0.3^{\circ}\text{C}$ 可测距离约为2-8米，测温效率约为500人/分钟



Wuhan Guide Infrared Co., Ltd.

Application in epidemic situation

- (1) Use area, scene: Applicable to gathering public places such as airports, train stations, large factories, supermarkets, schools and more.
- (2) Quantity: 10,000 sets have been sold, and continuous supply
- (3) Effects: GUIDE IR236 IR Fever Warning System can be applied to mass fever screening in crowded public places, which help to detect people with a potential fever and may contain or limit the spread of the Coronavirus through identification of infected individuals showing fever symptoms. GUIDE IR236 combines advanced technology such as thermography human temperature measurement algorithm and AI intelligent face recognition to make the equipment accurate and easy to use. Accuracy $< \pm 0.3^{\circ}\text{C}$ Measurable distance is about 2-8 meters, temperature measurement efficiency is about 500 people per minute



使用案例

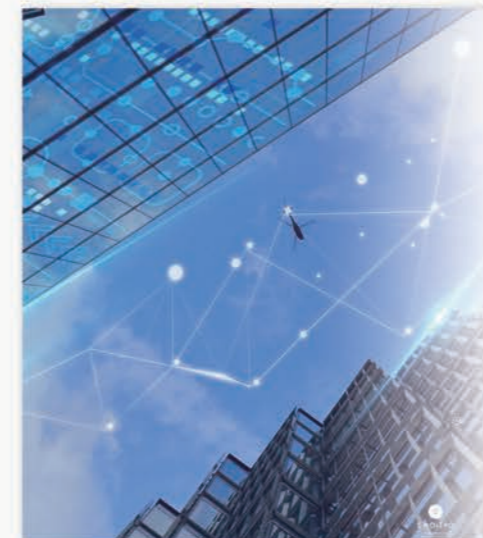
它可在人流密集的公共场所进行大面积监测，通过系统非接触式对人员体温进行初筛，快速找出并追踪体温超温人员，帮助排查人体发热症状。高德红外全自动热成像测温告警系统结合了红外人体测温算法和AI智能人脸识别等先进技术，测温精准且操作简单方便。该系统功能强大，多目标跟踪可确保不遗漏目标，自定义报警温区和高温屏蔽设置可避免其它高温物体的干扰，发现超温人员自动报警并拍照存储，方便用户查询与分类管理，是政府机关、机场、车站、大型工厂、学校、商业中心等公共场所卫生防疫的理想设备。



USE CASES

GUIDE IR236 IR Fever Warning System can be applied to mass fever screening in crowded public places, which help to detect people with a potential fever and may contain or limit the spread of the Coronavirus through identification of infected individuals showing fever symptoms. GUIDE IR236 combines advanced technology such as thermography human temperature measurement algorithm and AI intelligent face recognition to make the equipment accurate and easy to use.

The IR236 equipped with various powerful functions. Multi-target tracking can ensure that no targets are missed. Custom warning zones and high-temperature shielding settings can avoid interference from other high-temperature objects. When detect the febrile people, it supports automatic warning, tracking and photo taking for storage. Support video recording. Convenient to query and classify management. GUIDE IR236 is the ideal equipment for epidemic prevention in public places such as airports, stations, factories, schools, commercial centers and more.



产品（或系统）主要性能

- 效率高，500人/分钟
- 更安全，2-8米外测温
- 超智能，只检测人脸
- 全自动，发热即报警

网址：www.wuhan-guide.com

联系人：Sally Gao

电话：18707194018

邮箱：enquiry@guide-infrared.com

MAIN PERFORMANCE OF PRODUCTS (OR SYSTEMS)

- Faster, 500 people / minute
- Safer, temperature detect from 2-8 meters away
- Smarter, only detect human faces
- Fully automatic; alarm while detect fevers

Website: www.wuhan-guide.com

E-mail : enquiry@guide-infrared.com

Customer Hotline : +86-18707194018 Sally Gao

产品名称：天隆科技新冠核酸检测整体方案

Product : New novel coronavirus 2019 (2019-nCoV) nucleic acid test overall solution of Tianlong Science and Technology

西安天隆科技有限公司

此次疫情中投入使用情况

- (1) 使用地区、场景：中国、韩国、日本、新加坡、泰国、意大利、阿联酋、法国、丹麦、土耳其、哈萨克斯坦等国家和地区。
- (2) 数量：天隆科技新冠病毒核酸检测整体解决方案涵盖样本采集、核酸提取到核酸检测等相关产品。截止4.14，采样套装销售60余万套、核酸提取及检测试剂销售600余万人份、核酸提取及检测设备销售千余台。
- (3) 效果：天隆方案有效保障了疫情防控中的新冠核酸检测需求，陆续检出陕西、云南、四川、黑龙江等多个省份的首例阳性病例，在新冠疫情的防控中起到了至关重要的作用。近日，黑龙江绥芬河境外输入型病例激增，天隆方案跟随国家疾控中心专家紧急驰援，将该市的日核酸检测能力迅速提升至每日上千例，帮助当地迅速控制疫情。此外，在全国有序复工复产中，新冠核酸筛查也成为重要的筛查手段，天隆方案在复工复产、恢复经济中也发挥了重要作用。



Xi'an Tianlong Science and Technology Co., Ltd.

Application in epidemic situation

- (1) Use area, scene: China, Korea, Japan, Singapore, Thailand, Italy, United Arab Emirates, France, Denmark, Turkey, Kazakhstan and other countries and regions.
- (2) Quantity: The 2019-nCoV nucleic acid test solution of Tianlong Science and Technology covers sample collection, nucleic acid extraction to nucleic acid detection and other related products. As of April 14, more than 600,000 sets of sampling kits, more than 6 million sets of nucleic acid extraction and test reagent and more than 1,000 sets of nucleic acid extraction and test equipment have been sold.
- (3) Effects: Tianlong solution has effectively guaranteed the testing requirements of 2019-nCoV nucleic acid in epidemic prevention and control, and has successively detected the first positive case in Shaanxi, Yunnan, Sichuan, Heilongjiang and other provinces, playing a crucial role in the prevention and control of Coronavirus Disease 2019 (COVID-19). Recently, the number of imported cases from foreign countries in Suifenhe, Heilongjiang increased rapidly. Tianlong solution followed the experts from the Chinese Center for Disease Control and Prevention to urgently rescue the city, and then the city's daily nucleic acid detection capacity was rapidly increased to thousands of cases per day, which was helpful to control the epidemic quickly. In addition, in the orderly resumption of work and production across the country, the screening of 2019-nCoV nucleic acid has also become an important screening method, and Tianlong solution has played an important role in the resumption of work, production and economic recovery.



使用案例

武汉地区的客户有：湖北省疾控中心、武汉市疾控中心、武汉同济医院、武汉协和医院、武汉金银潭医院及武汉方舱医院等。其中，武汉同济医院拥有公司3台全自动核酸工作站、2台核酸提取仪、9台实时荧光定量PCR仪，配套相应采样套装和检测试剂，每天完成上千例样本的核酸检测，用于新冠肺炎的筛查和确诊。



USE CASES

Customers in Wuhan include: Hubei Center For Disease Control and Prevention, Wuhan Center for Disease Control and Prevention, Wuhan Tongji Hospital, Wuhan Union Hospital, Wuhan Jinyintan Hospital and Wuhan Mobile Cabin Hospitals. Among them, Wuhan Tongji Hospital has 3 fully-automatic nucleic acid workstations, 2 nucleic acid extraction instruments and 9 real-time fluorescence quantitative PCR instruments, which are equipped with corresponding sampling kits and detection reagents, and the nucleic acid testing of thousands of samples is completed every day for the screening and diagnosis of COVID-19.



产品（或系统）主要性能

(1) 新冠病毒核酸检测整体解决方案包含样本采集套装、核酸提取设备及试剂、荧光PCR检测设备及试剂，方案全面完善。(2) 采用病毒采样即灭活、旋转式核酸提取、液滴捕捉、实验分区、紫外消毒、空气过滤等多种措施防污染，保障医护人员安全。(3) 设备与试剂匹配良好，性能优异，检测结果精准、可靠。(4) 检测时间短，完成96个样本检测仅需2个小时左右。(5) 操作便捷，可实现自动化，适合疫情防控中的大量样本检测。(6) 产品型号多样，功能各异，能满足不同客户需求。(7) 方案中的产品已获得国内NMPA、韩国KFDA、欧盟CE及国际CB认证等权威认证，并已获得美国FDA EUA成功受理。

网址：www.medtl.com

联系人：李彦峰 18629546168 (海外销售总监) 李驰 13186121252 (市场部)

MAIN PERFORMANCE OF PRODUCTS (OR SYSTEMS)

(1) 2019-nCoV nucleic acid test overall solution includes sample collection kit, nucleic acid extraction equipment and reagents, fluorescent PCR detection equipment and reagents, which is comprehensive and fully improved.(2) Virus sampling, namely inactivation, rotating nucleic acid extraction, droplet capture, experimental areas, ultraviolet disinfection, air filtration and other measures are used to prevent pollution, so as to ensure the safety of medical staff.(3) The equipment and reagent match well, the performance is excellent, and the test result is accurate and reliable.(4) The test time is short, and it only takes about 2 hours to complete the detection of 96 samples.(5) It is easy to operate and can be automated, which is suitable for the detection of a large number of samples in epidemic prevention and control.(6) The various product models and different functions can satisfy the different customer demands.(7) The products in the solution have obtained such authoritative certifications as domestic NMPA, Korean KFDA, European Union CE and international CB certification, and have been successfully accepted by American FDA EUA.

Website: www.medtl.com

Contact: Li Yanfeng 18629546168 (overseas sales director) Li Chi 13186121252 (marketing department)

产品名称：水质在线监测系统

Product : Water Quality Online Monitoring System

聚光科技（杭州）股份有限公司

此次疫情中投入使用情况

- (1) 使用地区、场景：火神山、雷神山医院：医疗废水监测
- (2) 数量：2套COD、2套氨氮、2套余氯、2台流量计、2台PH、4台数采仪
- (3) 效果：全力保障了火神山、雷神山医院医疗废水水质在线监控数据的“真实、准确、全面”，达到了有效预警医疗废水对环境造成二次污染的目的。



Focused Photonics Inc.(FPI)

Application in epidemic situation

- (1) Use area, scene: Huoshenshan and Leishenshan hospitals: medical wastewater monitoring
- (2) Quantity: 2 sets of CO, 2 sets of ammonia nitrogen, 2 sets of residual chlorine, 2 sets of flow meters, 2 sets of PH, 4 sets of data acquisition instrument
- (3) Effect: fully guarantees the "real, accurate and comprehensive" on-line monitoring data of medical wastewater quality in Huoshenshan and Leishenshan hospitals, and achieves the purpose of effectively warning the secondary pollution of medical wastewater to the environment



使用案例

聚光科技仅用5天时间就完成了火神山、雷神山医院医疗废水监测设备的生产、运输、安装和调试。全力保障了水质在线监控数据的“真实、准确、全面”，达到了有效预警医疗废水对环境造成二次污染的目的。此外，该系统还广泛应用于多地的污染源水质监测项目，如：2018年“湖北省黄冈市罗田县12个乡镇污水处理厂”和“湖北省鄂州市鄂城区汀组、碧石、长港污水处理厂”项目。



USE CASES

FPI completed the production, transportation, installation and debugging of medical waste water monitoring equipment in Huoshenshan and Leishenshan hospitals in only 5 days. All efforts have been made to ensure the "authenticity, accuracy and comprehensiveness" of the online monitoring data of water quality, and the purpose of effectively warning the secondary pollution caused by medical wastewater to the environment has been achieved. In addition, the system is also widely used in many monitoring projects for water quality at pollution source, such as "12 township sewage treatment plants in Luotian County, Huanggang City, Hubei Province" and "Dingzu, Bishi and Changgang sewage treatment plants in Echeng District, Ezhou City, Hubei Province" in 2018.



产品（或系统）主要性能

该系统建设方案解决了常规水质自动监测站建设占地大、基建投入高、基建建设周期长等问题，采用预集成一体化户外分析站房，一体化站房占地面积约为10 平方米，占地面积可根据系统设备和仪表的不同配置进行适当调整。小型水站可根据监测点现场场地条件灵活选择安装位置，安装运行后也可根据现场应用需求实现低成本更换安装位置。本方案综合智能监测、自动控制、计算机应用和通讯网络等技术，采用国家标准分析方法，能够有效满足医疗污水水质参数的连续在线无人值守监测和监测数据实时传输展示及管理。所有测量结果通过通用模拟量或数字量输出接口统一上传至数据采集传输系统，然后将结果进行数据的储存和图形分析。整套系统结构简单，维护工作量少，实时性强，运行成本低，同时系统采用模块化结构，可任意组合监测项目。

MAIN PERFORMANCE OF PRODUCTS (OR SYSTEMS)

The construction program of the system solves the problems of conventional automatic monitoring station on water quality, such as large land occupation, high investment in infrastructure construction and long construction period. It adopts pre-integrated outdoor analysis station, which covers an area of about 10 square meters, and the area can be adjusted according to different configurations of the system equipment and instruments. The small-scale water station can flexibly select the installation location according to the site conditions of the monitoring point, and can also realize a low-cost change of the installation location according to the on-site application requirements after the installation and operation. The program integrates intelligent monitoring, automatic control, computer application, communication network and other technologies, and adopts national-standard analysis method, which can effectively meet the continuous online unattended monitoring of medical sewage quality parameters and real-time transmission, display and management of monitoring data. All measurement results are uploaded to the data acquisition and transmission system through the general analog or digital output interface, and then the results are stored and analyzed graphically. The whole system has the advantages of simple structure, less maintenance work, strong real-time performance and low operation cost. At the same time, the system adopts modular structure, which can combine monitoring items arbitrarily.

网址：www.fpi-inc.com

客户服务热线：400-7007-555

E-mail：fpi_market@fpi-inc.com

总机：0571-85012188

传真：0571-85012006

E-mail：fpi_market@fpi-inc.com

Switchboard: 0571-85012188

Fax: 0571-85012006

Website: www.fpi-inc.com

Customer Service Hotline:400-7007-555

产品名称：谱育科技EXPEC1810红外成像 体温快速筛查系统

Product : EXPEC 1810 Infrared Imaging Rapid Temperature Screening System

杭州谱育科技发展有限公司

此次疫情中投入使用情况

- (1) 使用地区、场景：京津冀、长三角等地区的车站、医院、学校以及企事业单位；
- (2) 数量：300余套
- (3) 效果：精准、高效筛查人群密集处的体温发热人员，大幅提高检测通行效率，降低了体温检测人员的交叉感染风险，有效保障现场工作人员的人身安全。



Hunan Herexi Instrument & Equipment Co. Ltd

Application in epidemic situation

- (1) Use area、scene: stations, hospitals, schools, enterprises and institutions in Beijing, Tianjin, Hebei and Yangtze River Delta;
- (2) Quantity: over 300 sets
- (3) Effect: accurate and efficient screening of people with fever in densely populated areas, greatly improving the efficiency of detection, reducing the risk of cross infection among temperature detection personnel, and effectively ensuring the personal safety of on-site staff



使用案例

在中国，EXPEC1810红外成像体温筛查系统在车站、医院、商场、学校、企事业单位等人流密集场所精准、高效筛查体温发热人群发挥重要作用。

EXPEC1810红外成像体温快速筛查系统采用非接触红外测温原理，在热像图中以不同颜色显示各人体表面温度分布，可实现高效率、高精度、大面积、多目标的远距离人体体温筛查。



USE CASES

In China, EXPEC 1810 infrared imaging body temperature screening system plays an important role in accurate and efficient screening of people with fever in crowded places such as stations, hospitals, shopping malls, schools, enterprises and institutions.

The EXPEC 1810 infrared imaging temperature rapid screening system adopts the principle of non-contact infrared temperature measurement, and displays the temperature distribution of each human body surface in different colors in the thermal image, thus realizing high-efficiency, high-precision, large-area, multi-objective and long-distance human body temperature screening.



产品（或系统）主要性能

Model 型号	Resolution 分辨率	Precision 测温精度	NETD 热灵敏度	IFOV 空间分辨率	FOV/Minimum imaging distance 视场角/最小成像距离
EXPEC 1810 A	384*288	±0.3°C	≤0.05°C@30°C	1.3mrad	24°x18°/0.3m
EXPEC 1810 B	640*480	±0.3°C	≤0.03°C@30°C	0.68mrad	24°x18°/0.2m

MAIN PERFORMANCE OF PRODUCTS (OR SYSTEMS)

Model	Resolution	Precision	NETD	IFOV	FOV/Minimum imaging distance
EXPEC 1810 A	384*288	±0.3°C	≤0.05°C@30°C	1.3mrad	24°x18°/0.3m
EXPEC 1810 B	640*480	±0.3°C	≤0.03°C@30°C	0.68mrad	24°x18°/0.2m

联系人：客户服务热线：400-7007-555

E-mail：fpi_market@fpi-inc.com

网址：www.puyukeji.cn

总机：0571-85012188

传真：0571-85012006

E-mail：fpi_market@fpi-inc.com

Website：www.puyukeji.cn

Contact：Customer Service Hotline：400-7007-555

Swichboard：0571-85012188

Fax：0571-85012006

产品名称：人脸识别测温终端系统

Product: Face Recognition Temperature Measurement Terminal System

汉威科技集团股份有限公司

此次疫情中投入使用情况

- (1) 使用地区、场景：人脸识别测温终端系统主要学校、社区、机场、酒店、医院等人员聚集的公共场合。
- (2) 数量：500台
- (3) 效果：能够快速识别体温，提高通行效率。



Hanwei Electronics Group Corporation

Application in epidemic situation

- (1) Use area, scene: face recognition temperature measuring terminal system applied in public places where personnel gather in schools, communities, airports, hotels and hospitals
- (2) Quantity: 500 sets
- (3) Effect: quickly identify body temperature and improve traffic efficiency



使用案例

在郑州市高新区32个（幼儿园、小学、初中、高中）学校安装了人脸识别测温终端系统，单个人脸识别测温终端数据库为1万张人脸数据，本地化部署，具备测温统计，高温异常报警，数据统计，考勤系统，温度设置，温度校准，节假日设置，另外还有陌生人的授权管理系统，系统对接公安局人脸识别系统，对于通缉分子直接上报功能等。本地化部署的人脸识别测温终端基本市30人/分钟，识别速度比较快，另外具有戴口罩识别，识别率99%以上。



USE CASES

Face recognition temperature measurement terminal system has been installed in 32 schools (kindergarten, primary school, junior high school and senior high school) in Zhengzhou High-tech Zone, with each database of a single face recognition temperature measurement terminal containing 10,000 face data. It features localized deployment, temperature measurement statistics, high temperature abnormal alarm, data statistics, attendance system, temperature setting, temperature calibration, holiday setting, as well as authorization management system for strangers, a system that connects with the face recognition system in Public Security Bureau, which can report wanted persons directly, etc. The localized face recognition temperature measurement terminal can identify around 30 people per minute, with relatively fast recognition speed. In addition, it can recognize masked personnel, with recognition rate exceeding 99%.

产品（或系统）主要性能

人脸识别：采用国际领先的人脸识别算法技术检测人脸；温度检测：采用红外热成像技术进行温度检测；高温报警：温度高于37.6°设备自动报警，利于疫情对重点关注人员管控；支持4G功能：可选4G模块，在没有网线接入的临时搭建场景和偏远场景实现数据传输；支持强光：可在户外强光、背光、逆光等恶劣环境使用；采用RK3399方案：强大的CPU，有利于设备在实际场景稳定工作；支持人体红外感应：感应到人体点亮补光灯，并点亮屏幕，人脸识别启动，无人脸后屏幕和补光5S内自动熄灭，补光灯在操作系统可开闭，可手动调节亮度；支持语音/视频呼叫：访问者可以通过对讲系统的呼叫访问；采用双目摄像头：支持活体检测，减少面部表情影响和照片欺诈的风险可用于白天和夜间；支持二次开发：开放性接口，助力合作伙伴快速实现行业应用升级；

网址：www.hanwei.cn

联系人：张江涛

客户服务热线：13663810716

MAIN PERFORMANCE OF PRODUCTS (OR SYSTEMS)

Face recognition: using the internationally leading face recognition algorithm technology to detect face; Temperature detection: using infrared thermal imaging technology for temperature detection; High temperature alarm: the device automatically alarms when the temperature is higher than 37.6°, which is conducive to the control of key personnel during the epidemic; Support 4G: optional 4G module, data transmission in temporarily constructed scene and remote scene without network cable access; Support strong light: can be used in outdoor strong light, backlight and other harsh environment; Adopt RK3399 program: powerful CPU, conducive to the stability of the device in real scenarios; Support infrared sensing of human body: fill light and the screen turned on and face recognition started when the human body is sensed; the screen and fill light automatically turned off within 5S when no face is detected; the fill light can be turned on and off in the operating system, and the brightness can be adjusted manually; Support voice/video calling: visitors can access through a call to the intercom system; Use binocular camera: support live-person detection, reduce the impact of facial expression and the risk of photo fraud; can be used during the day and at night; Support secondary development: open interface that can help partners quickly upgrade industry applications

Website: www.fpi-inc.com

Contact: Zhang Jiangtao

Customer Service Hotline: 13663810716